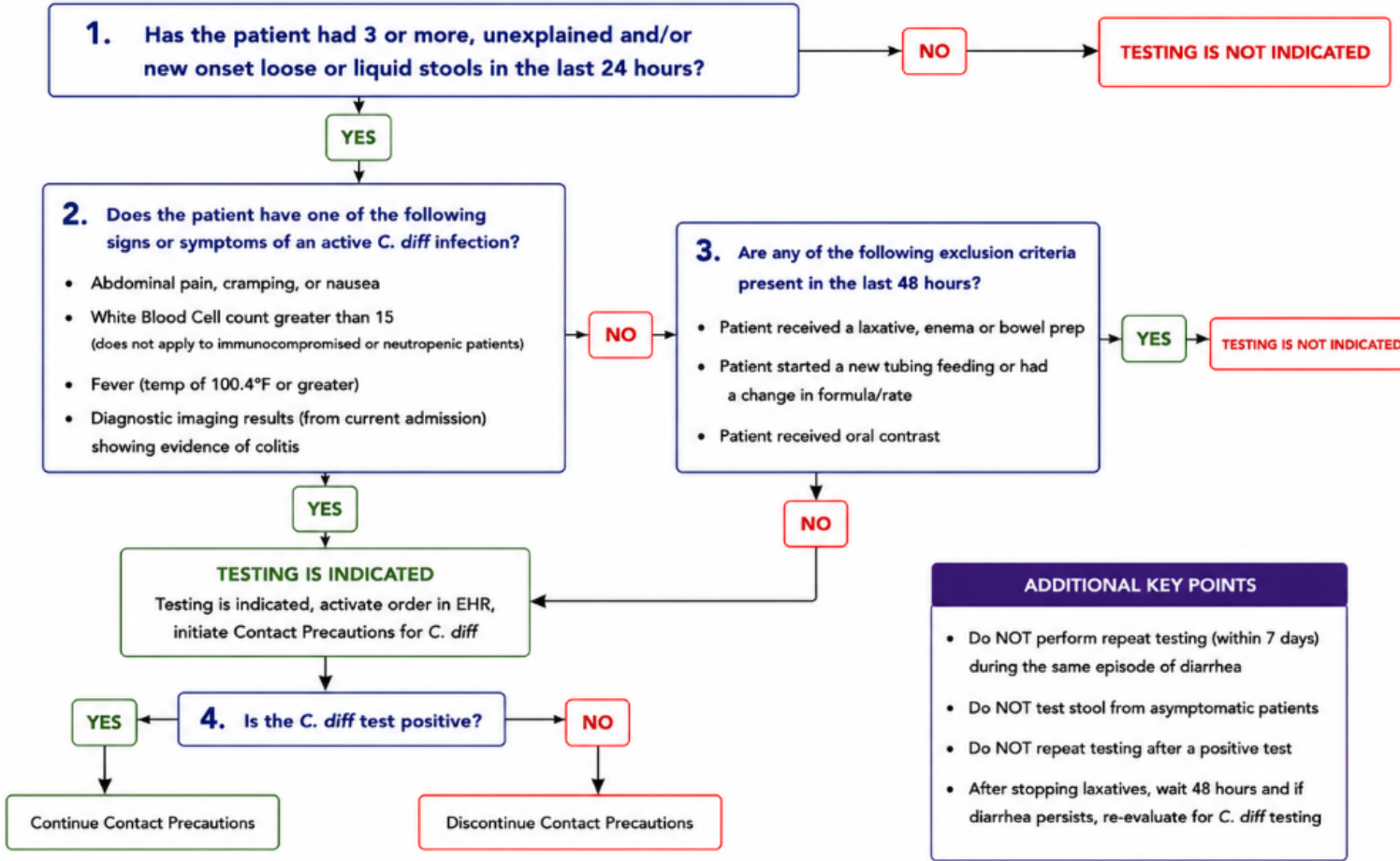


# TICKET TO TEST

## C. diff Testing Algorithm



**ADDITIONAL KEY POINTS**

- Do NOT perform repeat testing (within 7 days) during the same episode of diarrhea
- Do NOT test stool from asymptomatic patients
- Do NOT repeat testing after a positive test
- After stopping laxatives, wait 48 hours and if diarrhea persists, re-evaluate for C. diff testing

REQUIRED APPROVALS BEFORE TESTING	
1. PRIMARY RN	2. MANAGER / UNIT DIRECTOR